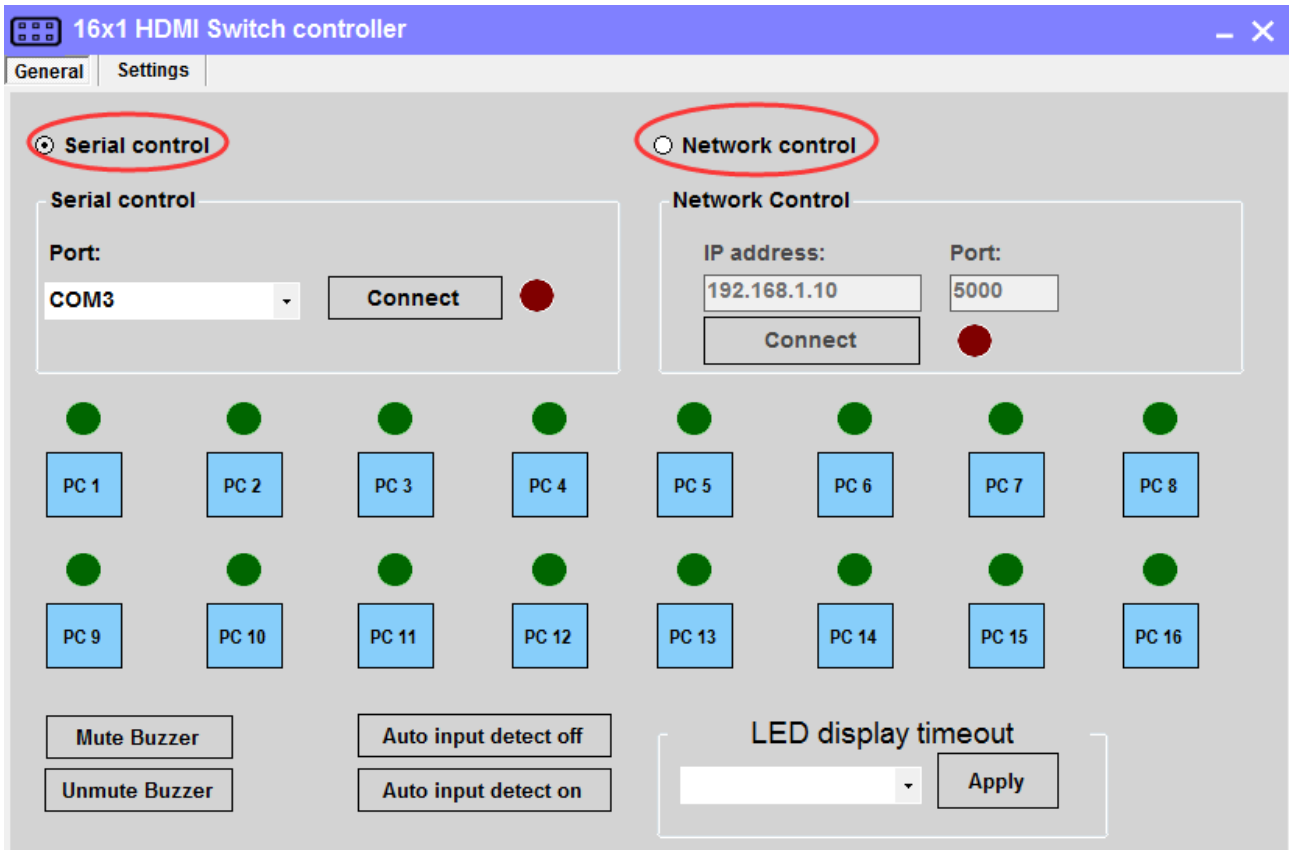


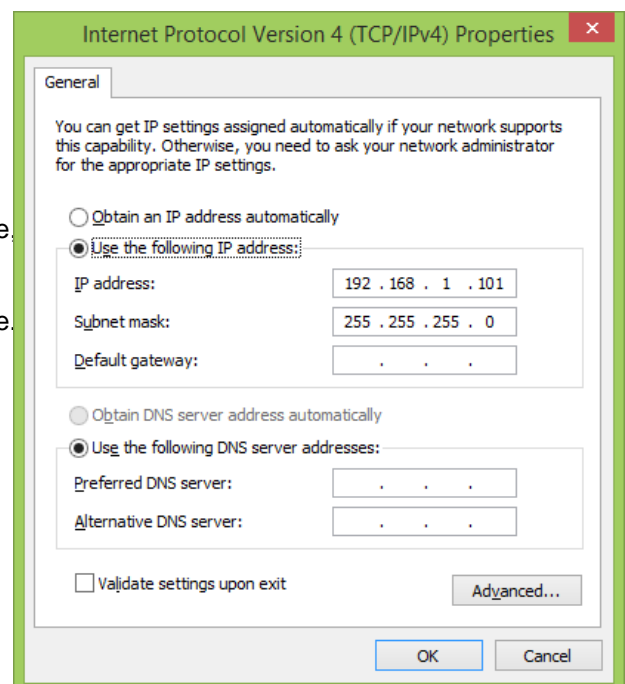
8x1 /16x1 HDMI Switch controller

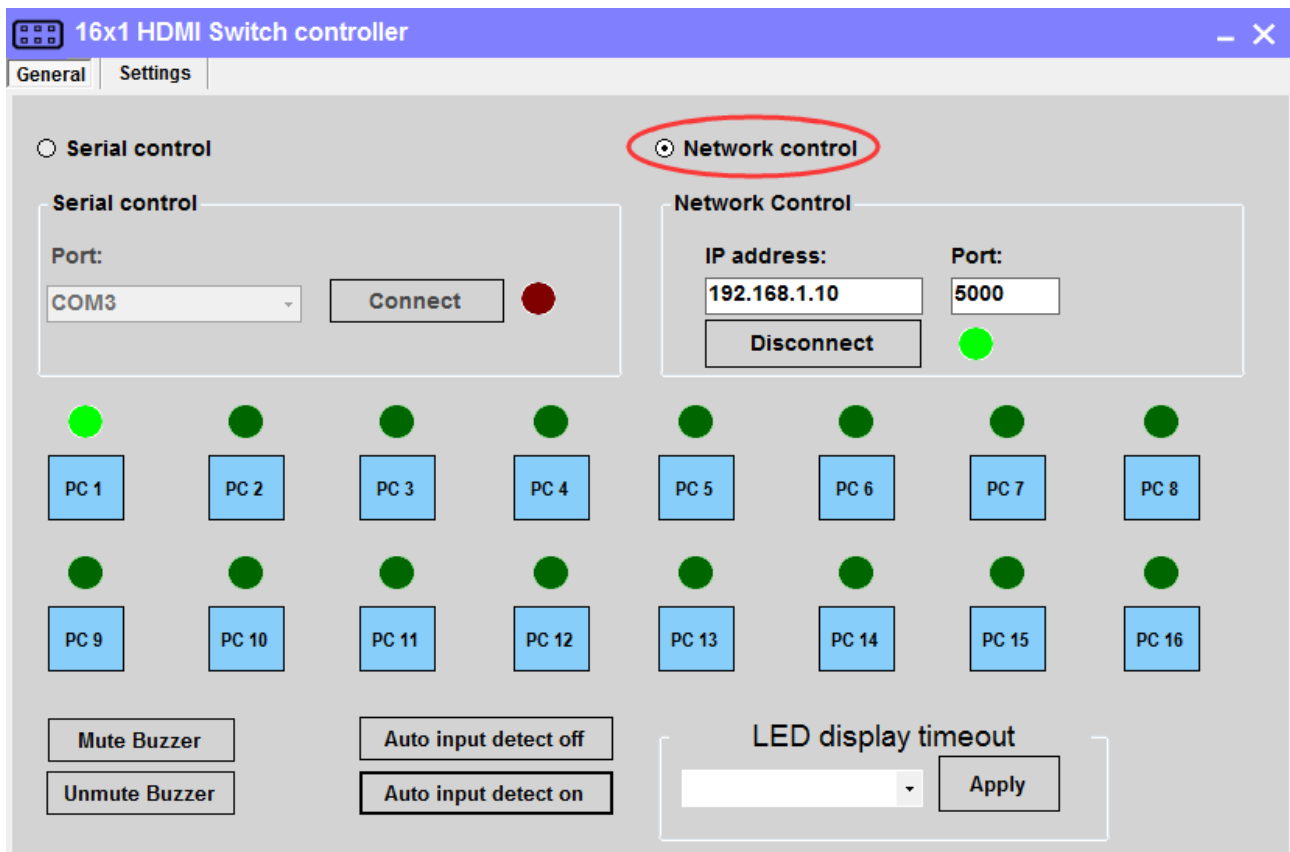
1. Connect the PC and HDMI switch with RS232 cable or cat cable. Power on HDMI switch. Double click 'Controller.exe' to run control software on the PC.
2. Select a communication method best for you, 'Serial control' is for RS232 cable connection, 'Network control' is for UTP cable connection;



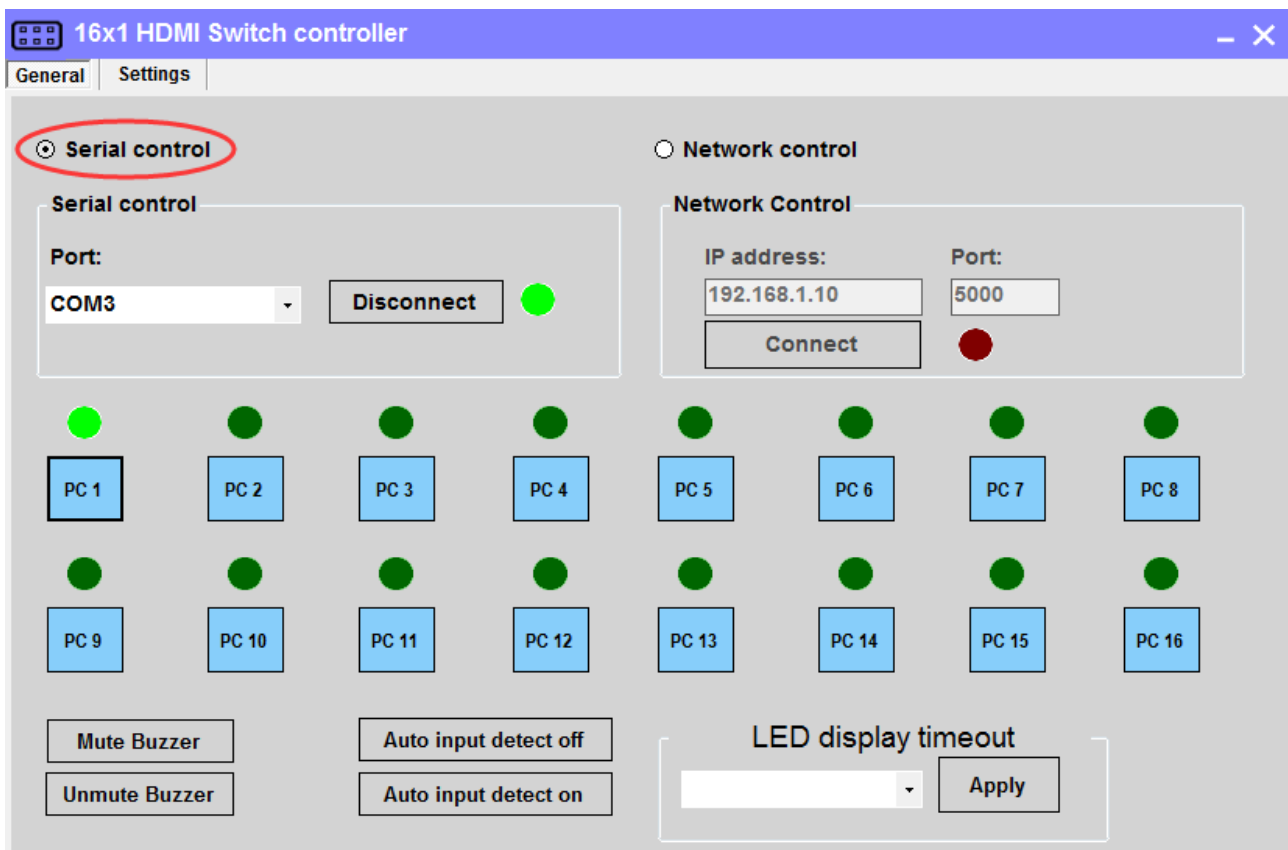
- 1). Network control:
 - a). Connect the PC's Ethernet port and LAN port of the HDMI switch with cat cable or connect both to the same Local Area Network.
 - b). If you connect the PC directly to the LAN port of the HDMI switch. You should setup IP address of the network adapter on the PC which running this software. make sure the IP address is between 192.168.1.2~192.168.1.254 but should not be 192.168.1.10. Please take the right picture for example.
 - c). Click button 'Connect' in network control section, the button will be changed to 'Connecting...', please wait for seconds, if succeed, the red indicator beside the button will change to green. If failed, please check if the cat cable is connected to the PC, the switch is powered on and the IP address setting of the PC is correct.

After connected, press PC1/PC2/.../PC16 button to select the input source.





- 2). Serial control: Select the serial communication port number which connect to the HDMI switch, then click 'Connect' to open the serial port and connect to HDMI switch.



After connected, press PC1/PC2/.../PC16 button to select the input source.

3. Function setting buttons:

- 1) **Mute buzzer:** Mute the buzzer, the buzzer on HDMI switch will not beep when press buttons.
- 2) **UNmute buzzer:** Turn on the buzzer, the buzzer on HDMI switch will beep when press buttons.
- 3) **Auto input detect off:**

When plug new HDMI input source to the switch or power on the HDMI input source, the switch would not do anything, also not when unplug or power off HDMI input source.

- 4) **Auto input detect on:**

When plug new HDMI input source to the switch or power on the HDMI input source, the switch will automatically select the input port that is connected to this input source.

When unplug or power off the HDMI input source, the switch will switch to the input port which is last plug in or last powered on HDMI input source.

- 5) **LED display timer out setting:**

10 seconds: The LED display on the from panel will be turn off after 10 seconds no operation.

30 seconds: The LED display on the from panel will be turn off after 10 seconds no operation.

Never: The LED display will be always on

4. Change IP address of the HDMI switch

Select 'Settings' page, modified the IP address and the port value to you want, then press 'Apply' button to change the IP settings of the HDMI switch. And then you could press button 'Query' to see if the IP settings are changed as you want.

The screenshot shows a web interface for a '16x1 HDMI Switch controller'. The 'Settings' tab is active. Under 'Network configurations', there are input fields for IP Address (192.168.1.10), Port (5000), Gate way address (192.168.1.1), and Mask address (255.255.255.0). A blue 'Apply' button is next to the Port field. To the right, a summary box displays the current settings: IP address: 192.168.001.010, Port: 05000, Gate way address: 192.168.001.001, and Mask address: 255.255.255.000. A 'Query' button is located below the summary box.

| Network configurations | |
|------------------------|-------|
| IP Address: | Port: |
| 192.168.1.10 | 5000 |
| Gate way address: | Apply |
| 192.168.1.1 | |
| Mask address | |
| 255.255.255.0 | |

IP address: 192.168.001.010
Port: 05000
Gate way address: 192.168.001.001
Mask address: 255.255.255.000

Query